

Setting up Internet Explorer for use with ProjectWise Web Client

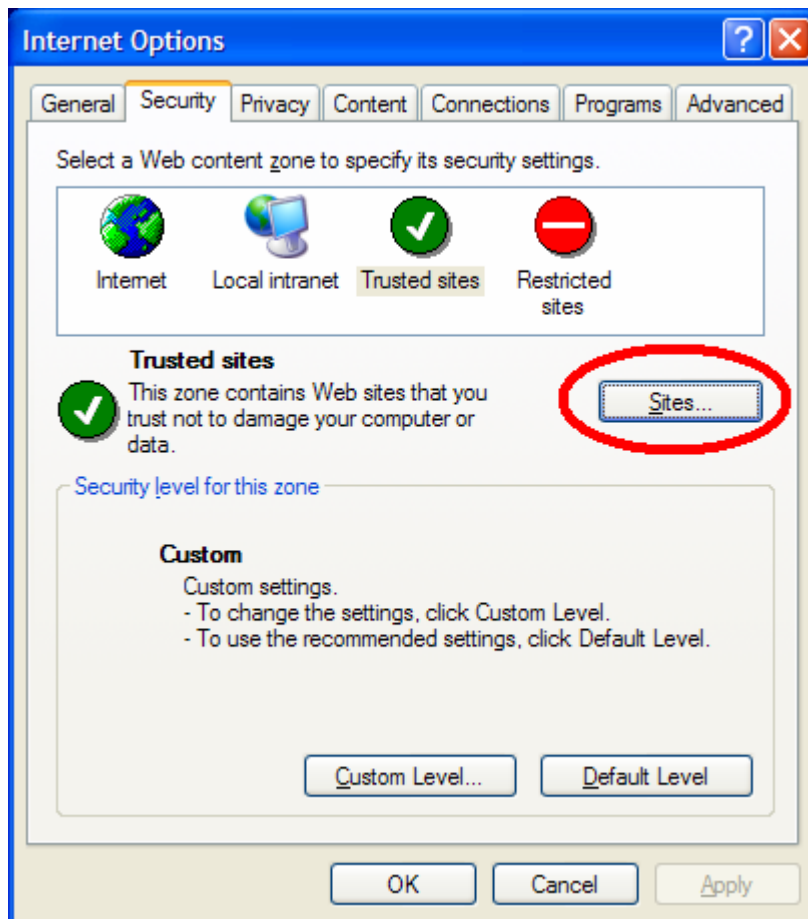
Depending on security settings in Internet Explorer, various warnings / prompts may appear when trying to check out documents from ProjectWise Web Client.
(<http://demo.nois.no/wel>)

Also if a Google toolbar is installed, it might block access to check-out / check-in.

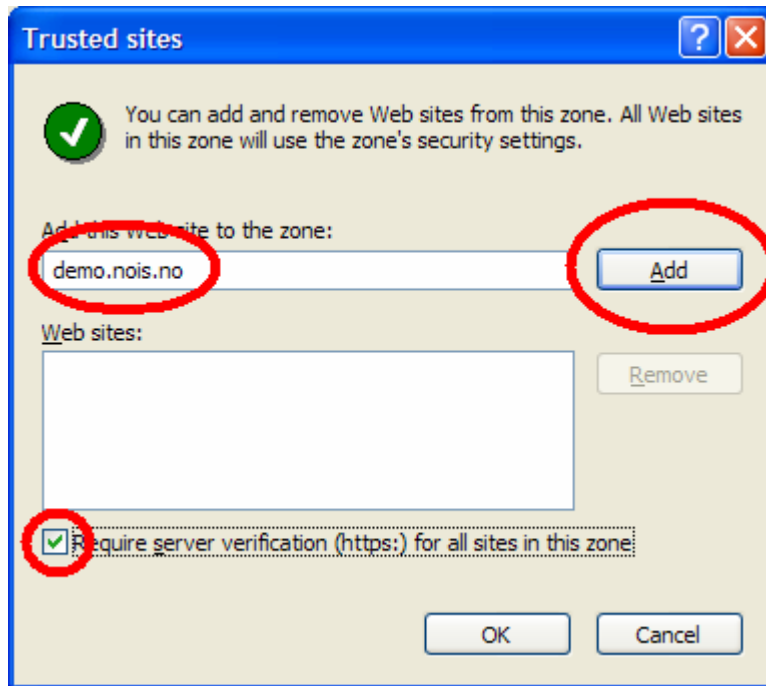
To avoid most of these problems it is strongly recommended to add the ProjectWise site to the list of **Trusted Sites** in Internet Explorer.

To add the ProjectWise site to Trusted Sites in Internet Explorer:

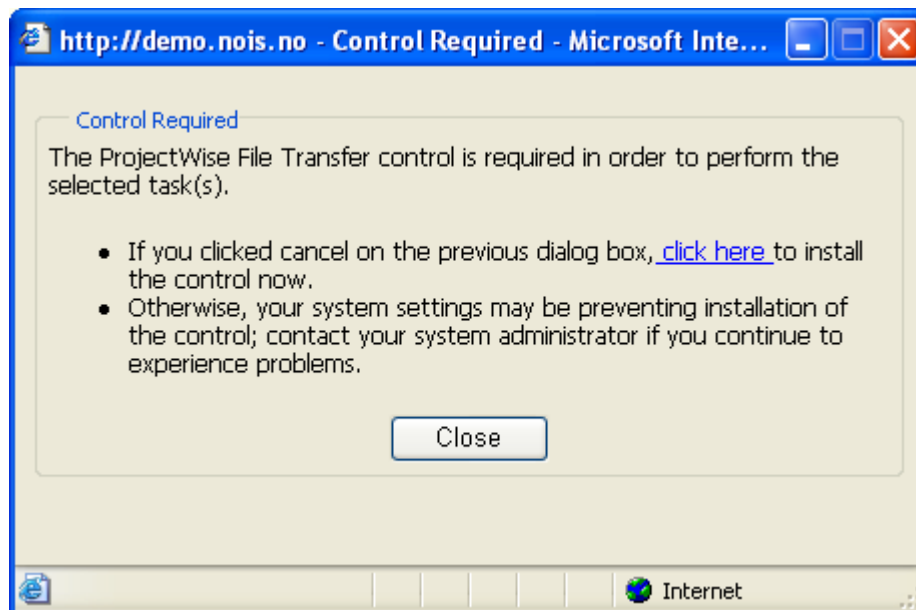
- Tools -> Internet Options -> Security



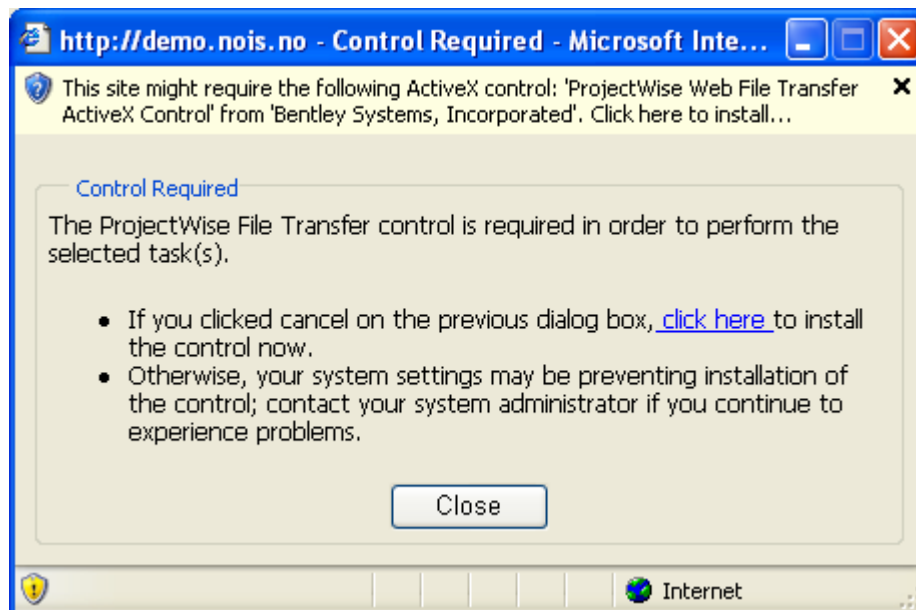
- Click **Sites**
- Keyin **demo.nois.no** and press **Add**
- Uncheck “Require Server verification (https).....”, if checked



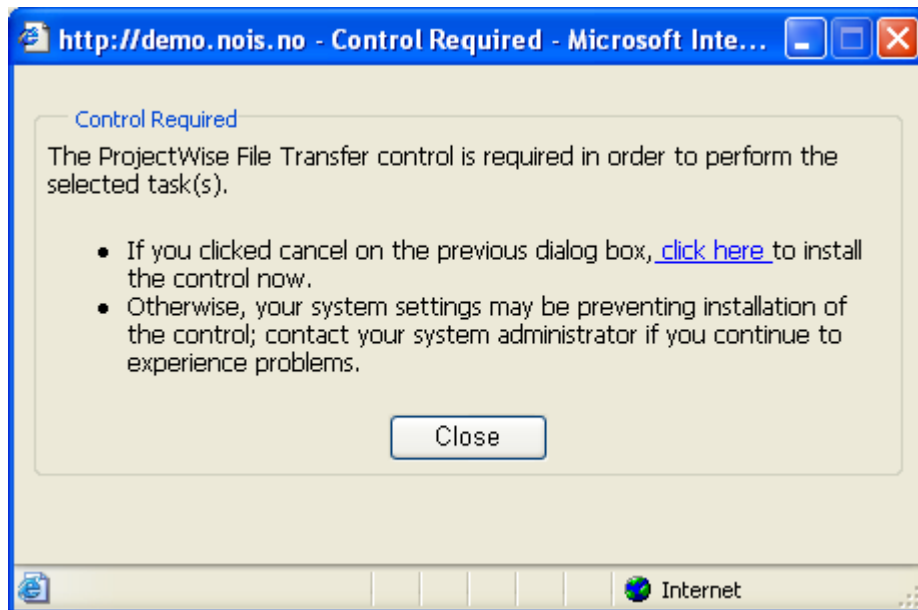
If demo.nois.no is not added as a Trusted Site, the following dialog boxes may appear. Follow the instructions.



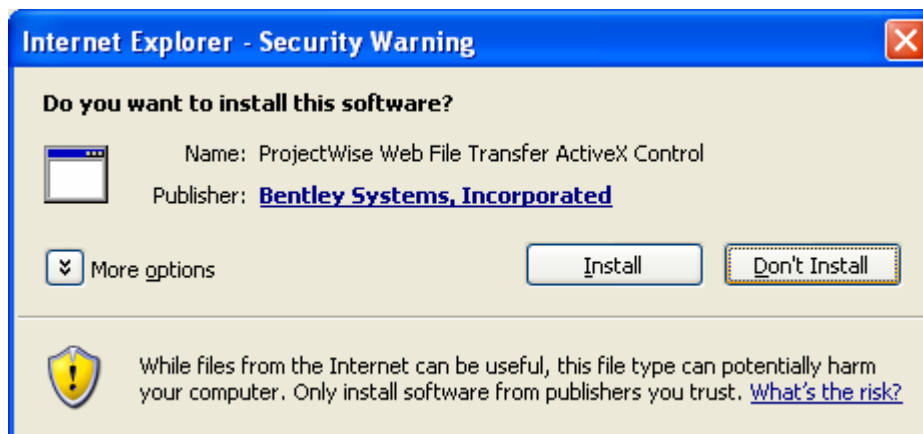
Click here ...



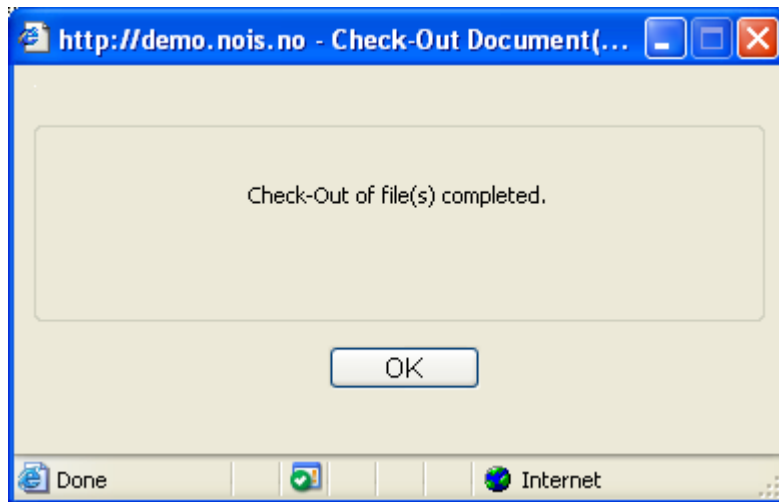
Right click -> Install Active X



Click here



Try check-out again...



Popup Blocking

If Popups are blocked in Internet Explorer, select **"Always allow popup's from this site"**

If Google Toolbar is installed in Internet Explorer and is blocking popup's, click on the field below so that the toolbar says "Popups okay".

